

Welcome to this workshop.
Read carefully these instructions before starting your work.

Your Device

Any desktop computer, laptop or good tablet can be used to connect and work in this workshop. The optimal resolution of the screen is 1920 x 1080 or higher. Also 1600 x 900 is acceptable. With less screen resolution the quality of the view is poor and probably not all the elements will be displayed.

Your privacy

According to severe EU rules we do our best to protect your privacy. (See the Cookies and Privacy policies in the home page).

This site is SSL certified¹ and we do not ask you any personal detail to register. But to guarantee the best level of privacy we need your cooperation. Please do not use your true personal name to register yourself and do not write any information that can identify you or anybody else when you work in the Digital Pathology Workshop.

1. SSL (Secure Sockets Layer) is a standard cryptographic protocol and security technology used for securing communications on the Internet and support authenticating of the communicating parties.

Registration

Sign Up

Please fill this form to create an account.

Username:*

Password:*

Confirm Password:*

Submit

Reset

Already have an account? [Login here.](#)

[Home page](#) [Click here.](#)

This operation is quite simple. Choose a user name and a password and click "Submit". Your password is immediately encrypted and we do not have the key to decrypt it. It means that **if you forget your password we cannot retrieve it**. If it happens the only possible solution is to register again with a different user name, but unfortunately all your previous work is irredeemably lost.

Please do not use your true personal name when you register. For example: "*Alberto*" or "*George*" or "*Françoise*" are not good user names. "*User45*" or "*old-cyto*" or "*sunshine*" are excellent usernames. After registration you can login with the chosen user name and password.

Select a case

After login a new page will display the list of available cases. Simply click a case to start your work.

Cases

[case-01](#)

[case-02](#)

[case-03](#)

[case-04](#)

[case-05](#)

[case-06](#)

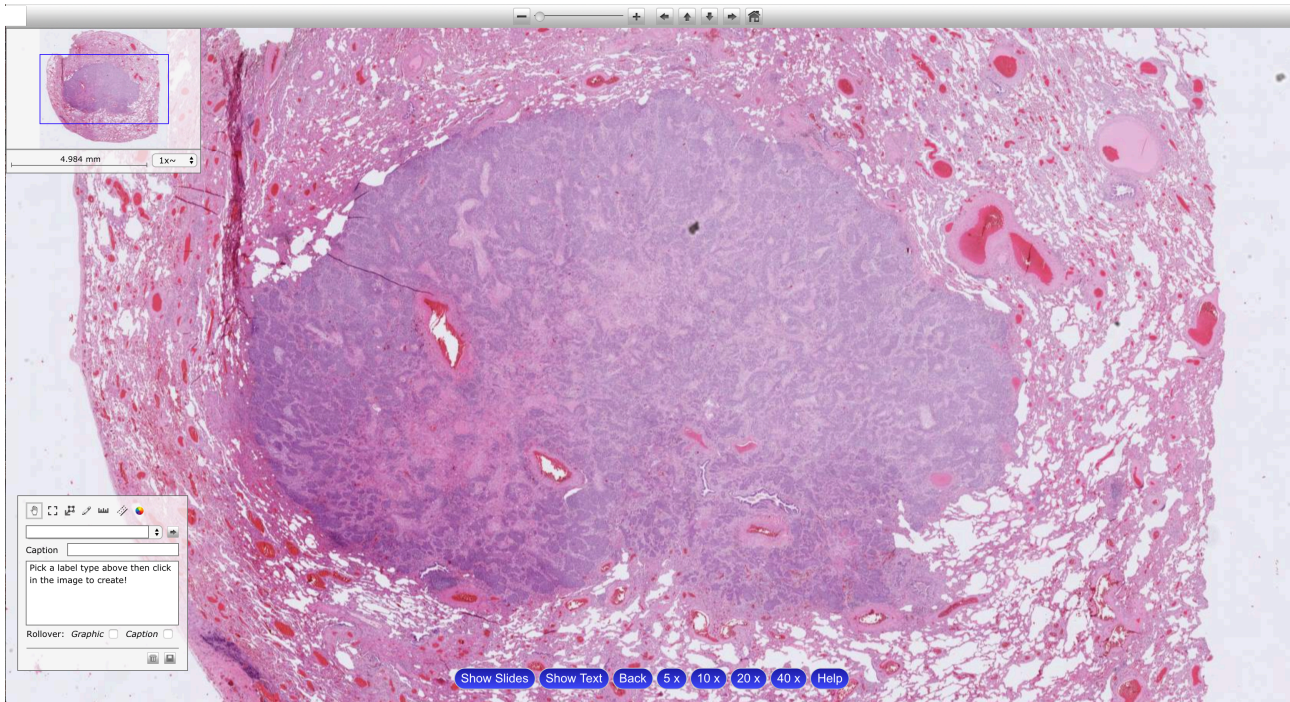
[case-07](#)

[case-08](#)

[case-09](#)

[case-10](#)

The Viewer



Clicking a case name a page similar to this one will be displayed. It is the so-called Viewer and it is made of different parts.

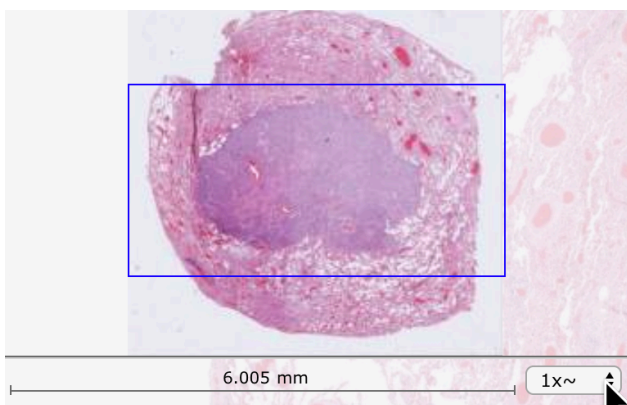
1. Top bar



It is made of:

- a cursor to zoom-in and zoom-out the image
You can zoom-in and zoom-out also with the mouse wheel
- four arrows to move up, down, left and right in the image
- the "Home" icon to go back to the start point and initial magnification.

2. Navigation map



At the top left of the Viewer you can find the *navigation map* of the image. It is a miniature of the whole image with a blue rectangle showing the area you are looking at. Changing magnification the blue rectangle becomes smaller or larger according to the chosen magnification.

3. Bottom selection buttons



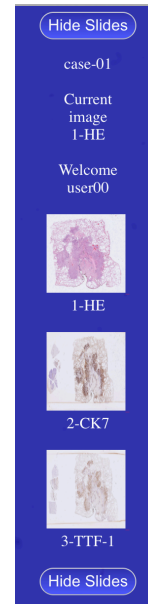
At the bottom of the Viewer there are six buttons. The explanations for each one follow.

3.1 Show Slides



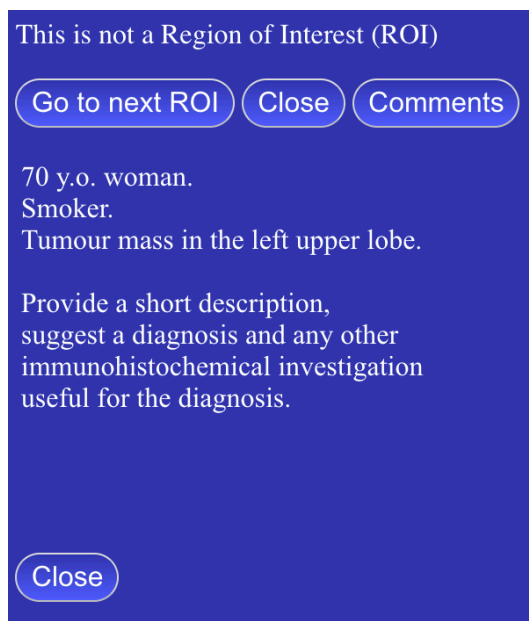
Clicking “*Show Slides*” a narrow column-like window appears at the right side of the image. It shows the name of the current displayed image, the name of the user and an icon for each image included in the case.

Click the corresponding icon to select and show an image. A click on “*Hide Slides*” will close the window.



3.2 Show Text

In some slides, to facilitate the work of the users one or more Region Of Interest (ROI) are identified. In every ROI there are some features helpful to understand the diagnostic problem. Clicking for the first time “*Show Text*” a window like the following one will open.



Click “*Close*” to leave the window.

Opening the window for the first time the

statement “*This is not a Region Of Interest*” is displayed. It means that you are at the beginning of your navigation in the image and no ROIs have yet been displayed.

Clicking “*Go to next ROI*” the first ROI (if present) is displayed.

Clicking “*Comments*” a text field is displayed. In this field you can write your comments and notes related to the case. Don’t forget to save your work.

Some clinical news is reported below the above described three buttons.

Clicking “*Go to next ROI*” the first ROI is displayed and a new message in the window is asking you to take one or more actions.

Clicking again “*Go to next ROI*” a new ROI and a new message are displayed. After the last ROI you are redirect to the first one.

View of the window with the “Comments” text box open.

This is not a Region of Interest (ROI)

[Go to next ROI](#) [Close](#) [Comments](#)

70 y.o. woman.
Smoker.
Tumour mass in the left upper lobe.

Provide a short description,
suggest a diagnosis and any other
immunohistochemical investigation
useful for the diagnosis.

[Close](#)

Write here the diagnostic proposal, remarks or suggestions

[Save](#) [Close Comments](#)

3.3 Back



Clicking “Back” you are redirected to the Cases page.

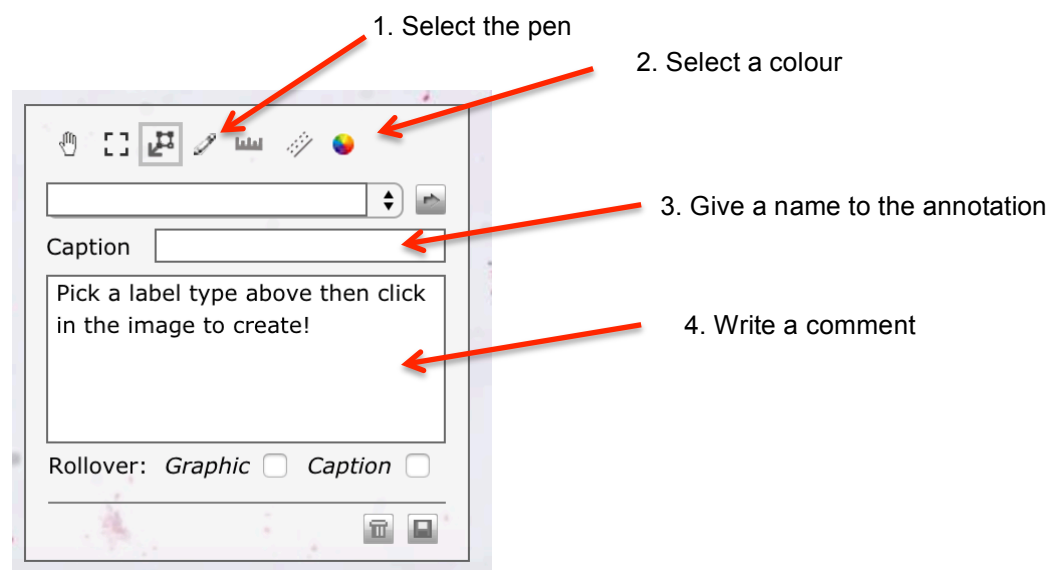
3.4 Magnification buttons



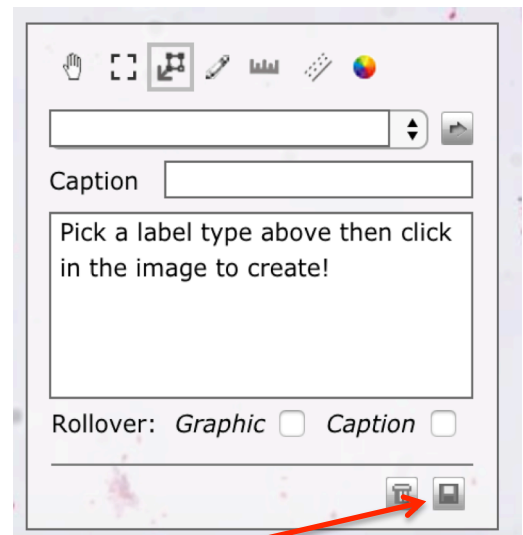
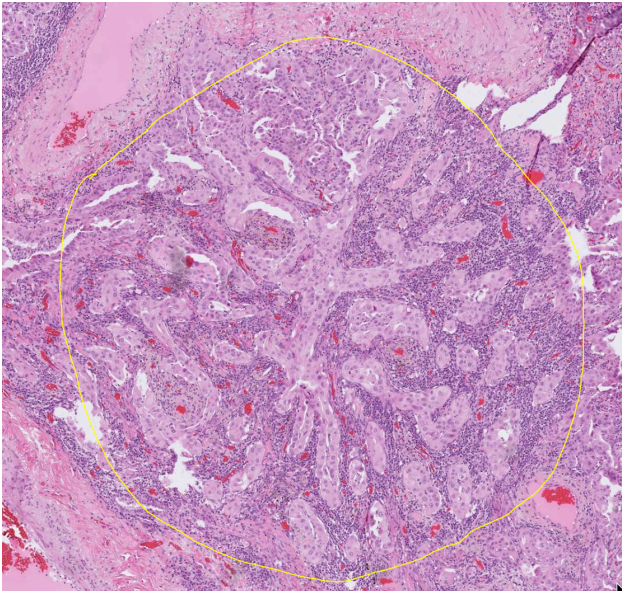
Each button corresponds to the displayed fixed image magnification.

4. Annotation Box

This tool allows you to mark cells or other features in the digital image and write some related notes. To make a simple annotation follow the following steps.

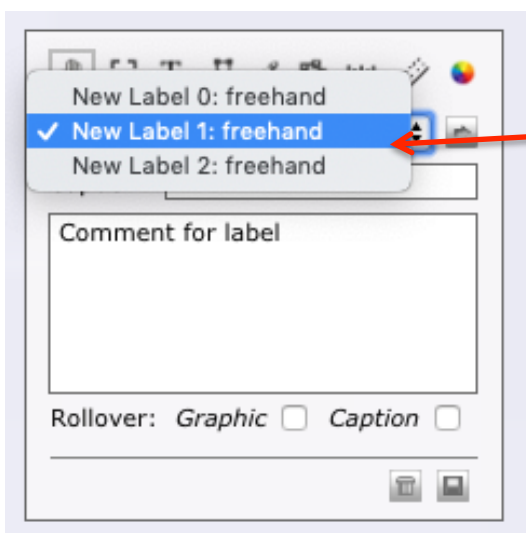


5. Mark the slide using the mouse.

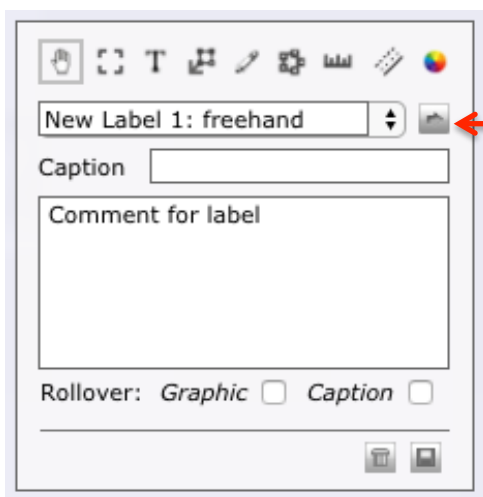


Remember to save your work

6. To go to a marked area:



Select the annotation



Click the arrow to go to the selected annotation